



Geomarine S.r.l.





Geomarine S.r.l., founded in 1997, offers services and consultancy in marine and land fields. Our company deals with aspects of geophysical, geotechnical and environmental activities related to coasts and offshore. We use the most advanced equipment to provide complete technological support by analyzing the needs and objectives of our clients from the planning phase through the acquisition, processing and interpretation of data phases as well. This brings together a team of specialized technicians and highly qualified people capable to meet the customer's needs by offering technical, scientific and technological support services.

OUR SERVICES

SEA

- Geognostic Surveys
- Geophysical Surveys
- Bathymetric and Morphologic Surveys
- Archaeological Investigations
- Vessel, ROV and Diving Positioning
- Burge and Tug Positioning
- Construction Support
- ROV Inspection
- Environmental Survey and Sampling
- Granulometric and Mineralogic Investigation

LAND

- Topographic Surveys
- Geophysical Surveys
- Geognostic Surveys
- Geotechnical Investigations
- Environmental Monitoring

Geomarine S.r.l. obtained the UNI EN ISO 9001:2008 Certification and SOA OS21 CATEGORY Certification for the production of its services and for planning



References

- Italian Port Authority
CNR Ancona
Centro Universitario di Biologia Marina "G.Bacchi" - Livorno
Coastal Consulting & Exploration S.r.l. - Bari
Cooperativa San Martino - Chioggia
Bourbon Offshore D.N.T. S.r.l. - Ravenna (RA)
EDISON S.p.A.
EMS S.p.A.
Fugro Oceansismica S.p.A. - Roma
Gas S.r.l. - Bologna
Geolab S.r.l. - Pozzuoli (NA)
I.L.M.A. S.r.l. - Ancona (AN)
Impresa Mantovani S.p.A. - Mestre
ICRAM Istituto Centrale per la Ricerca Scientifica Tecnologica Applicata al Mare - Roma
La Dragaggi S.r.l. - Marghera - Venezia
Marine Consulting S.r.l. - Ravenna
Ministero lavori pubblici - Ufficio Genio Civile - Opere Marittime Ancona
Oceanix S.r.l. - Napoli (NA)
SIDRA S.p.A. - Roma
Sviluppo Italia Aree Produttive S.p.A.
Università di Bari - Politecnico - Dipartimento di Ingegneria Acque e Chimica
Università di Firenze - Dipartimento di Scienze della terra
Università di Pisa - Facoltà di Biologia
Università di Messina - Dipartimento di Scienze della Terra
Università di Roma - Facoltà di Biologia
Università di Urbino - Istituto di Sedimentologia e Geodinamica
Vecchia Darsena S.r.l. - Senigallia



Services

LAND SURVEY

Geomarine provides planning and managing services for geophysical survey, geognostic survey and monitoring onshore. The company has track records in the following fields:

- TECHNICAL DIRECTION AND CONSULTING OF AMBIENTAL AND ADMINISTRATIVE MONITORING OF DISPOSAL OF NON-HAZARDOUS GARBAGE
- GEOLOGICAL AND GEOTECHNICAL REPORTS FOR CONSTRUCTION OF PULLED SITES, HYDRAULICAL AND HYDROGEOLOGICAL STUDIES EDITING
- MANAGING OF CHARACTERIZATION PLAN PERFORMING AND PULLED SITES DRAINING

TOPOGRAPHIC SURVEY

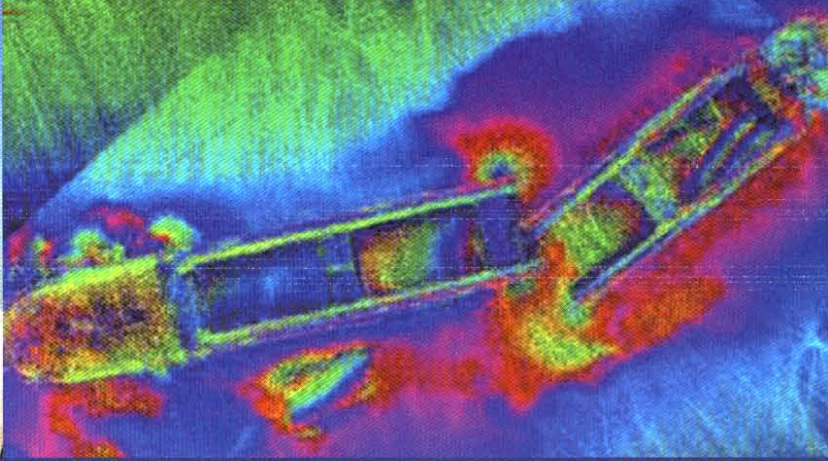
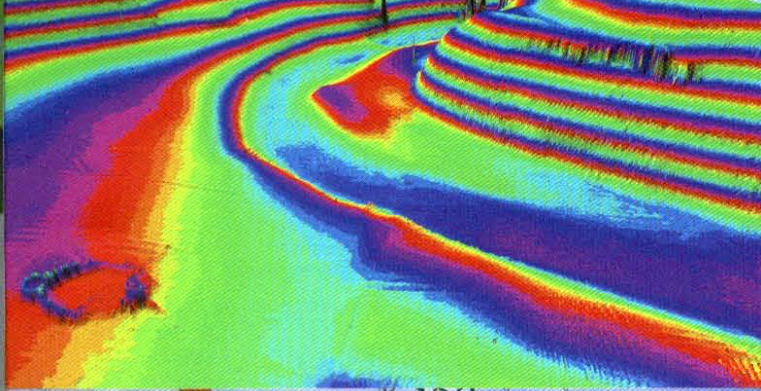
Geomarine has at its disposal advanced technologies (GPS – RTK – Total Station and laser scanner) for topographic surveys. The latest innovation consists in the Laser Scanner that enables a fast georeferentiation of the 3D survey through the GPS interfacement. Besides it allows to acquire in a very short time a big quantity of data with a high resolution, permitting to reach also the inaccessible zones.

- TOPOGRAPHIC AND ARCHITECTURAL SURVEY
- LEVELLING
- VOLUME COMPUTATION
- STABILITY MONITORING
- CIVIL AND INDUSTRIAL 3D RECONSTRUCTION AND RENDERING
- PLOT PLAN AND FOUNDATION PLAN
- PIPEING LAYOUT
- ISOMETRICS

GEOPHYSICAL SURVEY

Modern technologies in the field of geophysics allow to achieve detailed and precious information about the seabed and substratum characteristics. Geomarine is capable to work in shallow, deep and ultra deep water. Through the use of acoustic systems (BOOMER – SPARKER) and magnetometer systems, Geomarine performs geophysical surveys in the following fields:

- ARCHAEOLOGICAL AND ENVIRONMENTAL SURVEY
- SITE SURVEY
- COASTAL MANAGEMENT AND ENGINEERING SURVEY
- ROUTE SURVEY FOR PIPES AND CABLES



GEOTECHNICAL SURVEY

This kind of survey was born to be used for the planning and realization of a vibrocorer designed for marine geotechnics. Over the years Geomarine has increased its range of machines and services, improving their efficiency and reliability both in shallow and deep water, owing to the growing experience of our planner and technical staff.

Geotechnical services offered:

- VIBROCORING
- GRAVITY CORING
- BOX CORING
- PCPT
- ROTARY CORING (SEA/LAND)

ROV INSPECTION

Geomarine's technical staff use geophysics as their eyes to study and analyze seabed characteristics; but seeing structures, fauna and lithological changes through direct images makes everything clearer and provides a sure result.

- SURVEY AND GEOPHYSICS
- VISUAL INSPECTION

- CORING SUPPORT
- PIPELINE AND CABLE DETECTION

POSITIONING AND COSTRUCTION SUPPORT

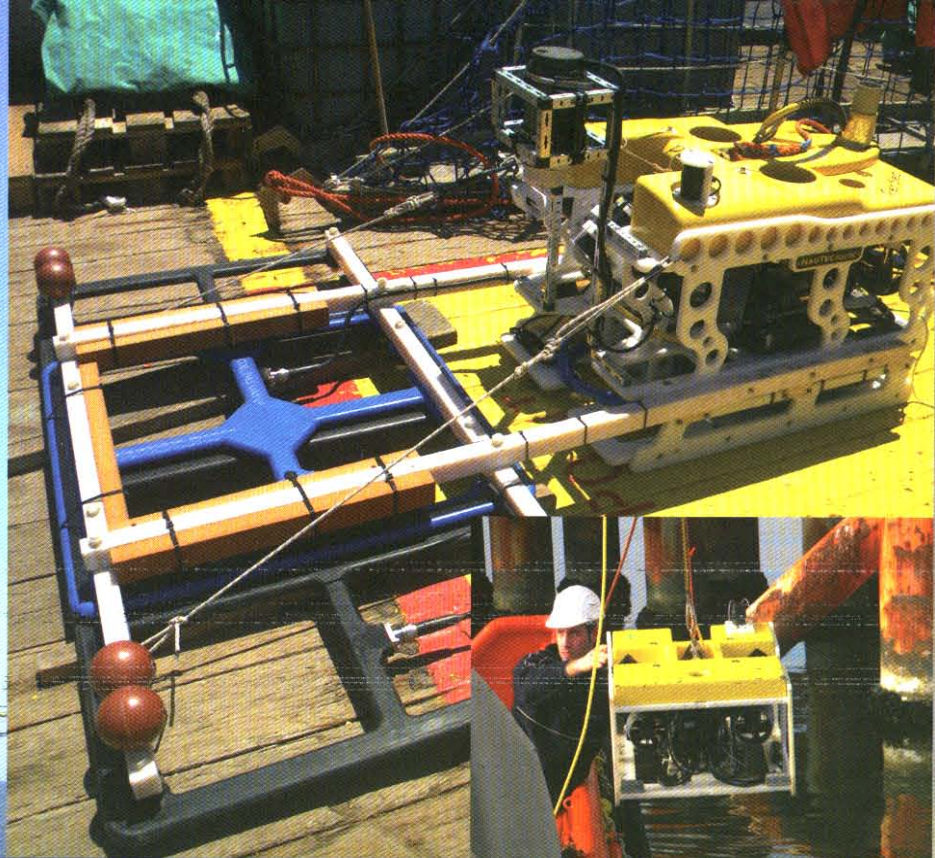
Geomarine supplies solutions to provide positioning services with new technologies, trained and qualified people. Geomarine's track record covers an extended range of communication and monitoring activities including:

INSHORE CONSTRUCTION OPERATION

- BOAT, BURGE AND TUG POSITIONING
- CIVIL AND INDUSTRIAL INSTALLATION
- TRIPOD AND SEA CLIFF
- DREDGE POSITIONING
- PLATFORM AND SUB-SEA INSTALLATION
- LAYING SUPPORT SURVEY FOR PIPE AND CABLE BURIAL

OFFSHORE CONSTRUCTION OPERATION

- PIPELINE LAY SUPPORT AND TOUCH DOWN MONITORING
- VESSEL SPREAD AND TUG POSITIONING
- UNDERWATER ACOUSTIC POSITIONING



ENVIRONMENTAL SURVEY

In the last years the investigation into the environmental impact caused by the anthropogenic works realized inshore and offshore fields has become a sensible issue. Geomarine wants to provide its clients with the necessary support to work and respect the environment during the realization and installation phases. The company offers the services listed below:

- SEDIMENT AND WATER SAMPLING FOR CHEMICAL, BIOLOGICAL AND PHYSICAL ANALYS
- OCEANOGRAPHIC SURVEYS

LABORATORY ANALYSIS

Geomarine's laboratory uses analysis methodologies recognized by Italian and International standards (CNR – CIBM – ISPRA – APAT – ARPA – ICRAM – National Research Council – UNI – U.S. Standard – British Standard). Making use of its team of Biologists and Geologists the company can provide :

- BIOLOGICAL ANALYSIS
- PARTICLE SIZE DISTRIBUTION

PROCESSING AND FINAL REPORTING

Geomarine boasts wide experience in every kind of data processing both in office, on-site and on-board while meeting clients' requirements and providing an accurate product, respecting the requirement timetable. The company pays great attention to report and chart production in order to offer a clear and complete final product.

- SCOPE OF WORKS AND SURVEY PROCEDURES
- SEISMIC PROCESSING AND INTERPRETATION
- 3D VOLUME CALCULATION
- 3D REPRESENTATION AND RENDERING
- DATA ANALYSIS
- DRAGGING PROJECT
- VIDEO LOGGING
- ROV VIDEO MAKING
- CHARTING AND REPORTING

Future Innovation

Fielding new resources and people Geomarine started a development course of management and layout software for the ROV survey.

Geomarine's new software will be able to acquire all systems necessary for pipeline and cable detection/inspection (Pipetracker, cabletracker, acoustic positioning, dual-head profiler, bathy, altimeter and gyro) to locate the position and define the state of a pipeline or a cable in real time.

Mission

1.2m

1.3m

Geomarine is a dynamic and continuously evolving company composed of young people which created in its workplace a familiar environment where the strength of collaboration is the first value and every single member represents an essential element of the company's processes. For this reason Geomarine pays great attention to its associates' professional training to make them always ready to face new challenges.

They work respecting the security standards requested by the Oil and Gas industry, ensuring safety for both human and natural resources.

Geomarine has as its first objective the capture of a bigger portion of the market, keeping its quality standards high and without renouncing the attention given to interpersonal relationships inside and outside the company.



Geomarine Property's Equipments

VESSEL

Pilot Boat	Sessa Marine Ocean Line Dorado 22
Flectable Boat	Callegari Albatro (4.8m x 2.1m)

SEA RESEARCE EQUIPMENT

Position et Navigation	Fugro Omnistar 9200G2 DGPS System Trimble DSM132 DGSNN DGPS System Hemisphere GPS-COMPASS System V101 Topcon Legacy-E DGPS/RTK System TSS DMS-05 Dynamic Motion Sensor et Gyrocompass FOG200 FiberOptic Gyrocompass et Motion Sensor NavPro Windows Navigation Professional PDS2000 Navigation & Acquisition Software SendTo PipeTraker Geomarine Acquisition Software
Bathymetry	Reson SeaBat 8101 Multibeam Echosounder Odom Hydrotrac HT 97001 Single Beam Echosounder Valeport Mini SVP Profiler Valeport ;Mini SVS Profiler
Stratigraphy	Sub Bottom Profiler Innomar SES-2000 Compact
Seafloor Imaging	Side Scan Sonar CM-2 DF
Geotechnics	Geomarine Vibrocorer GEOV2 (3m/4.5m/6m Core Barrel) Geomarine Vibrocorer GEOV3 (3m/4.5m Core Barrel) Geomarine Gravitycorer G-GEO Light-1 (1m/1.5m) Geomarine Gravitycorer G-GEO Heavy-1 (1m/2m/3m) Van Veen Grab Light/Heavy
Environmental	Multiparametric Probe Hydrolab Data Sonde 4

LAND RESEARCE EQUIPMENT

Geotechnical Monitoring	Inclinometric 50302510 Slope Indicator Conductivity-PH-Temperature Hanna Instruments Probes Freatimeter MLS 50
-------------------------	--

 **Geomarine** s.r.l.

Via Guidi, 3/4

60019 Senigallia (AN) - Italy

Tel.: +39 071 660 83 46 - Fax.: +39 071 661 07 75

<http://www.geomarine.it> - email: info@geomarine.it