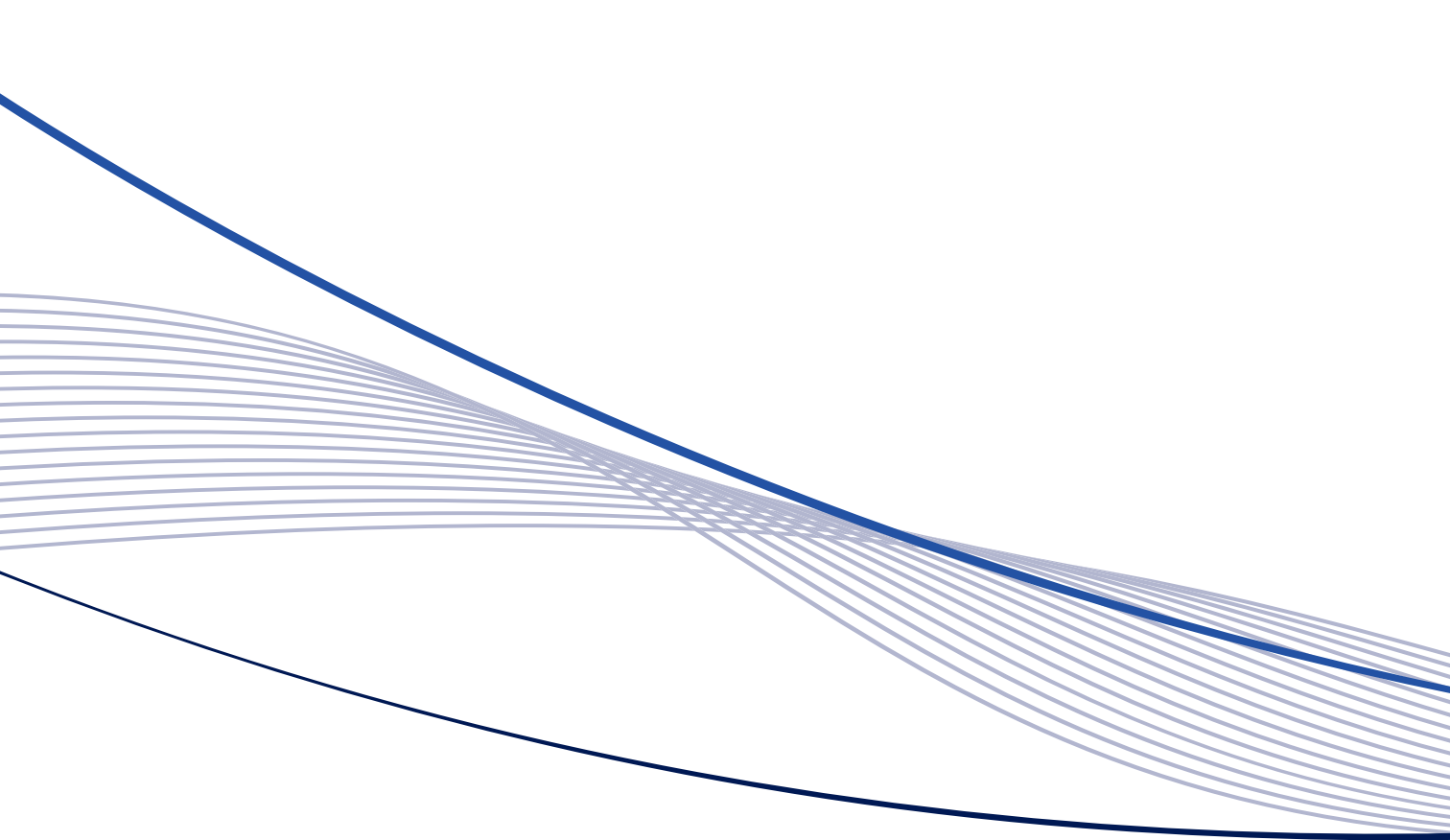


**DIMMS**  
G R O U P

*To go where nobody wants to go.*



**DIMMS**

*Enjoy your building.*

# Why **DIMMS** Group

- 1** Environmental protection through the use of technology
- 2** Modular polyvalent and adaptable solutions for any needs
- 3** Socially responsible: we promote the well-being of territory where we work
- 4** Certified quality
- 5** R&D investing because innovation build our future
- 6** Constant business growth

# About us

DIMMS Control history started in 1992 as a specialized supplier company of geotechnical monitoring and testing services.

First company's years were marked by striving for continuous improvement, spreading ever more the range of surveying and testing services offered, to serve the construction and infrastructural industries. Excellence in the proposed services along with the high productivity ensured, contributed to the rapid growth of the company, also attested by DIMMS commitments in the main national and abroad work projects.

Market demand and corporate strategies progressively lead to the implementation of new operational business units, as well as to the establishment of national and international branch offices to ensure the follow up of several work's projects.

Overtime company's growth also results in strategic corporate acquisition of ELLETIPI srl and GEOMARINE srl firms leading companies

in their work's fields, leading to the establishment of DIMMS GROUP capable of offering exploratory and testing surveys both to onshore as well as offshore environments. To date DIMMS Group is made up of leading companies internationally recognized as:

## **DIMMS Control S.p.A.**

Company specialized in geophysical, geological and geotechnical investigation surveys applied to monitoring and checking of major infrastructural projects; DIMMS Control S.p.A. also owns testing laboratory facilities for geotechnical testing (Soil & Rock Mechanics) and construction materials testing (Concrete, Steel, Cements, etc). Company operates through Italian national offices (in Avellino and Turin) and through two foreign branches.

## **Elletipi S.r.l.**

Company specialized in geotechnical and material laboratory testing (Soils and Rocks Mechanics, Construction materials, Woods, Paints, Bitumens, Metallurgy, etc), in situ testing activities, structural and monitoring checking activities. offices located in Romania and Mozambique.

## **Geomarine S.r.l.**

Company operative in the marine field capable to provide geophysical, geotechnical, environmental and positioning surveys to support the industrial installations, related to the nearshore and offshore activities especially of the Oil & Gas industry.

## **DIMMS Geophysical Mozambique Lda**

Mozambican company specialized in geological, geophysical and geotechnical exploration and testing surveys supplies for the local market and multinational companies operating in the Oil & Gas industry in the African continent.



# Major Projects Locations

|             |              |              |                      |
|-------------|--------------|--------------|----------------------|
| Italy       | Algeria      | Iraq         | Qatar                |
| Switzerland | Egypt        | England      | Myanmar              |
| France      | Mozambique   | Saudi Arabia | Venezuela            |
| Albania     | Tanzania     | Oman         | Russia               |
| Croatia     | Zimbabwe     | Romania      | United Arab Emirates |
| Montenegro  | South Africa | Bahrain      | Northern Ireland     |



# Quality System Certifications



*Company commitments in providing excellence in services provided, environmental awareness, health and safety of the workers, is granted by the adoption, within each company belonging to DIMMS Group, of procedures and actions in line with the expectations of stakeholders.*

*DIMMS Group has adopted its own organizational and governance model according to the Legislative Decree n.231 of 2001, with the aim of establishing a comprehensive set of guiding principles to ensure the respect of fairness and transparency requirements and to prevent offenses commission according to the Decree.*

*Attention to quality services and customer focus, environmental protection as well as health & safety compliance are then regulated by the adopted Integrated Policy Quality Management System:*

## **Quality Management System**

UNI EN ISO 9001:2008

## **Enviromental Management System**

UNI EN ISO 14001:2004

## **Safety Management System**

OHSAS 18001:2007

# Main Customers

Current and potential customers of DIMMS Group are represented by the biggest Construction and Engineering companies, private and governative, as well as the major international energy companies.



# Permits & Accreditations

DIMMS Group companies owns all the ministerial licenses issued by Italian Ministry of Infrastructure according the art.59 of the Presidential Decree n.380 of 2001 namely:

- soil and rock mechanics laboratory - art. 59, D.P.R.380/01;
- coring and drilling - art. 59, D.P.R. 380/01;
- concrete and steel laboratory - art. 20, L. 1086/71;
- geognostic survey - OS20-B art.61 c.3 D.P.R. 207/2010 - Attachment A;
- topographic survey - OS20-A art.61 c.3 D.P.R. 207/2010 - Attachment A.

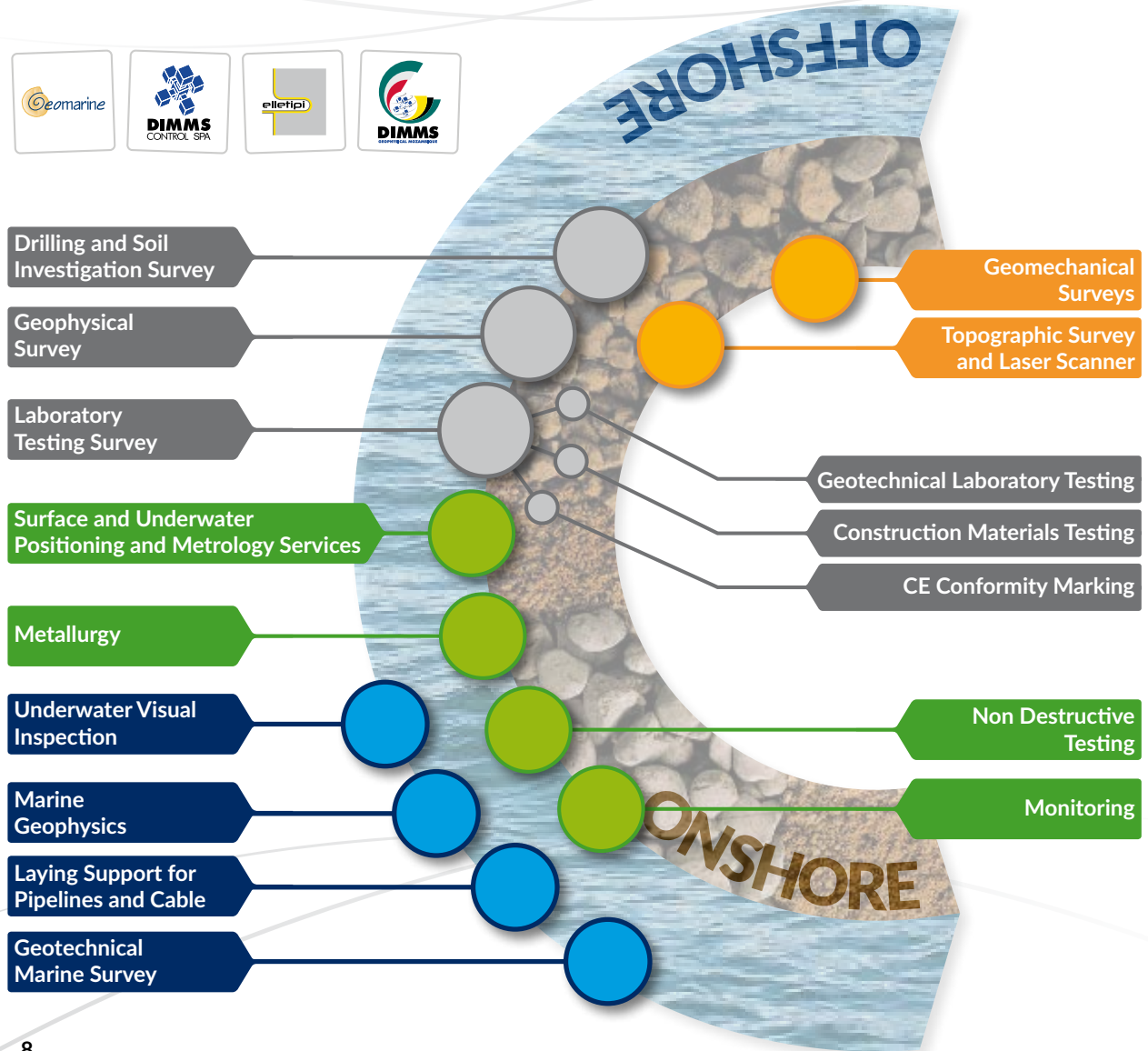
Elletipi S.r.l. is a "Notified Body pursuant to the Construction Products Regulation" in accordance with the Directive 89/106/CEE, authorized to issue a certification of conformity of construction products.

DIMMS Group companies are officially registered as reliable suppliers for the main Oil & Gas and Engineering companies.



# Business Unit and Services

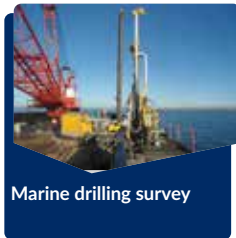
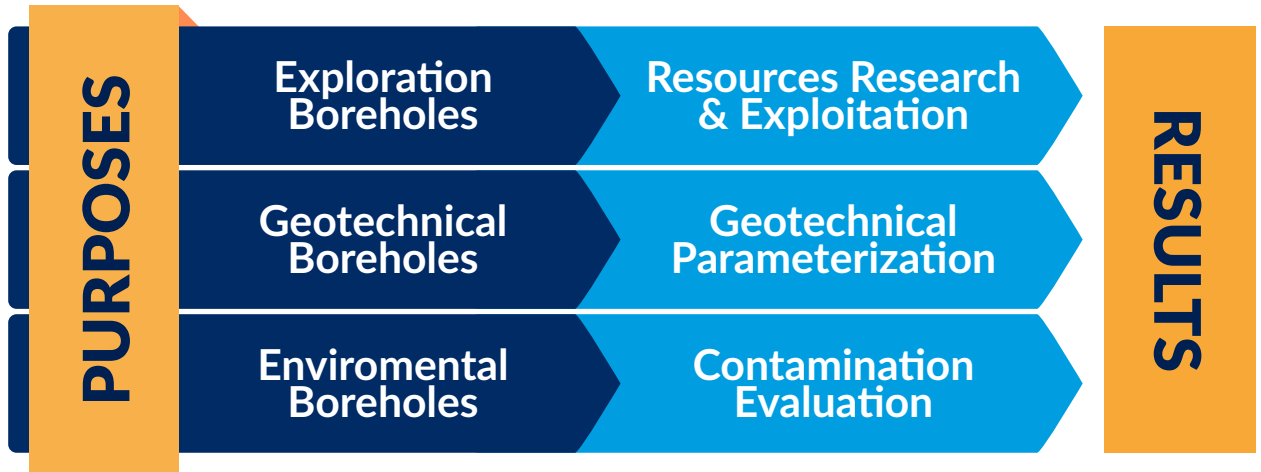
## Onshore - Nearshore - Offshore





# Business Unit and Services | Onshore Drilling and Soil Investigation Surveys

**DIMMS Group** can support any customer or work's project needing the investigation of subsoil conditions. The physico-mechanical characterization of the subsoil volumes involved by the work's project is useful to fit with the planning requirements. Depending on the purposes of the survey and field conditions various are the investigation techniques employable such as:





Concrete piles coring



Environmental sampling



Pumping tests



Piezometric survey



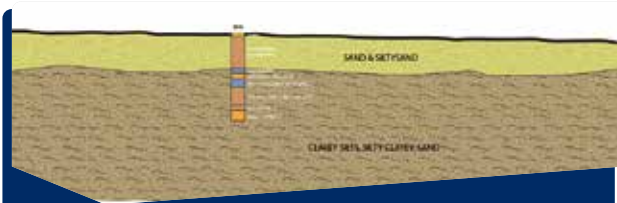
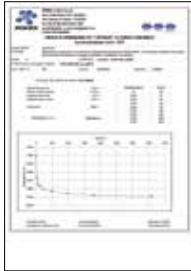
Piezometric reading campaign

Business Unit and Services | Onshore

## Drilling and Soil Investigation Surveys - Output



- Stratigraphic log
- CPT, CPTU, SCPT, DPSH Report
- Inclinometer Report
- Pressumeter Report
- Impermeability Report



Geological sections



Geological mapping by geological reconnaissance survey



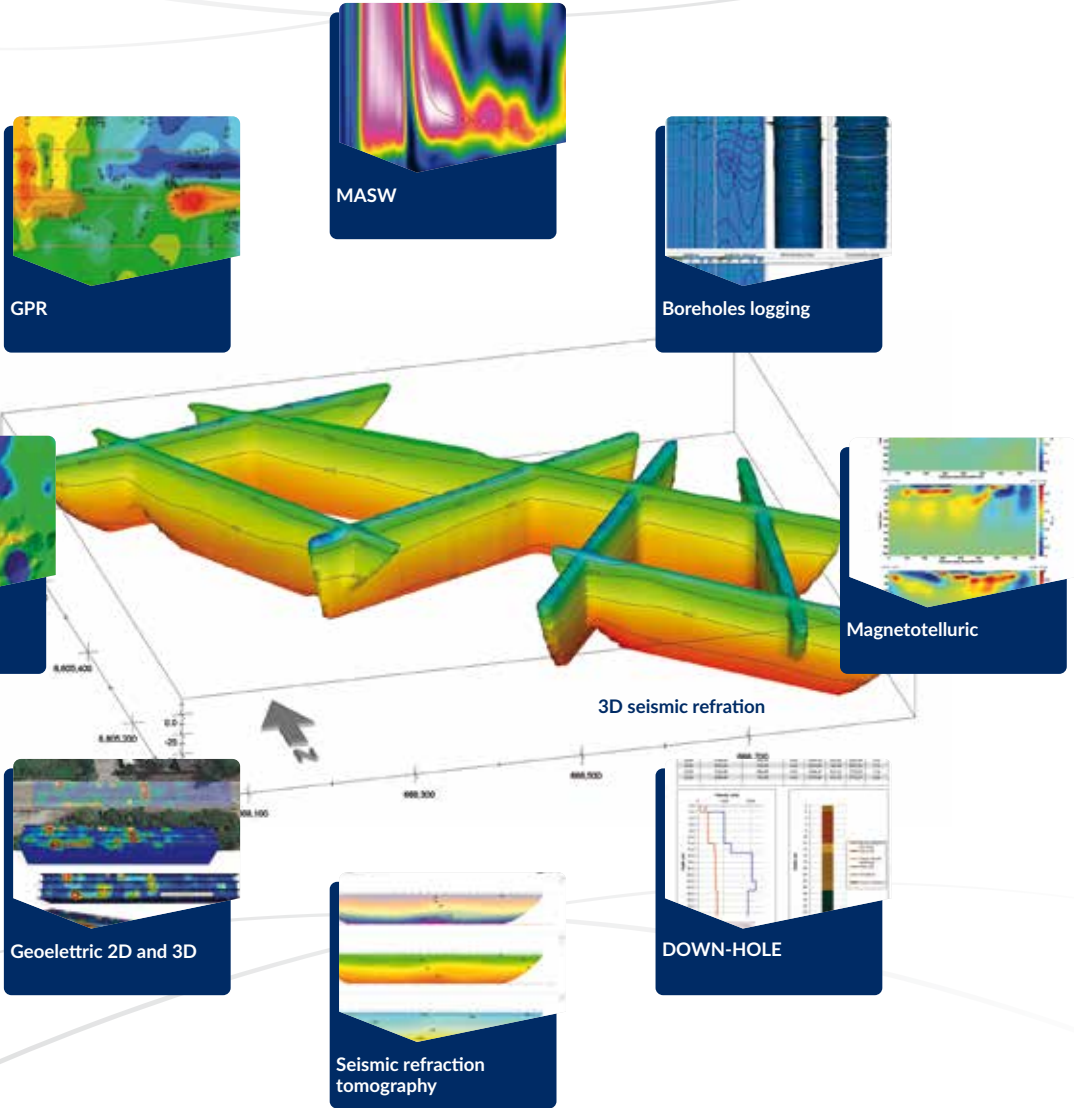
2D-3D ground model reconstruction

Business Unit and Services | Onshore  
**Geophysical Survey**

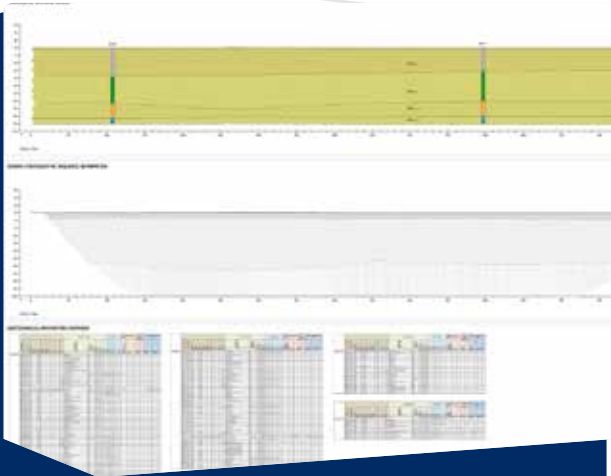
A wide range of indirect and non invasive geophysical methodologies can be used to reconstruct the subsurface model or for search buried structures. Several are the techniques employable each of which measure the variation of specific physical parameters (such as density, elasticity, magnetic susceptibility, electrical conductivity, etc) and analyzing their modification in the space. Among these can be summarized the main following categories:

- Seismic refraction (SR) survey**: Image showing a desert landscape with survey equipment.
- Electromagnetometer survey**: Image showing a person in a field with a long cable.
- Tunnels seismic refraction survey**: Image showing a person in a tunnel.
- 2D geoelectrical survey**: Image showing a survey rig with red sensors.
- Ground penetration radar (GPR)**: Image showing a person operating a GPR machine on a paved surface.
- Seismic refraction survey (SRT)**: Image showing a red survey vehicle in a field.
- Borehole geophysics**  
Down hole, Cross hole: Image showing a person in a hard hat and safety vest operating equipment.
- MASW-ReMI**: Image showing a survey rig on a road.
- Seismic structural survey**: Image showing a person in a hard hat and safety vest operating equipment.
- 3D electrical resistivity tomography (ERT)**: Image showing a survey rig on a road with orange cones.
- Tunnel structural monitoring with ground penetration radar (GPR)**: Image showing a person in a hard hat and safety vest operating equipment.
- Boreholes logging**: Image showing a survey rig with a laptop.
- Gravimetric survey**: Image showing a person in a hard hat and safety vest operating equipment.
- Magnetometric survey**: Image showing a survey rig in a field.
- Magnetotelluric survey (MT)**: Image showing a survey rig in a field.

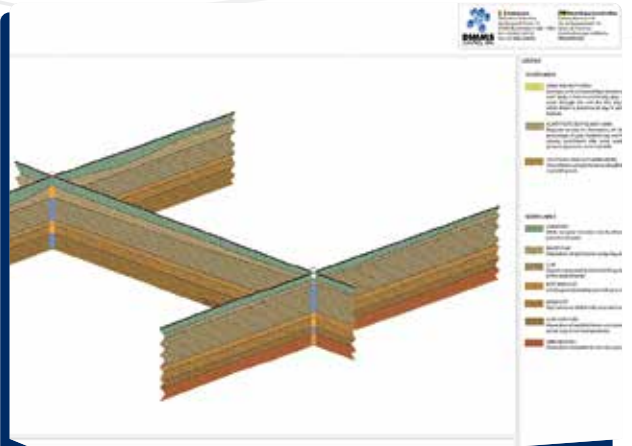
Business Unit and Services | Onshore  
**Geophysical Survey - Output**



# Geophysical and Geotechnical Correlations - Output



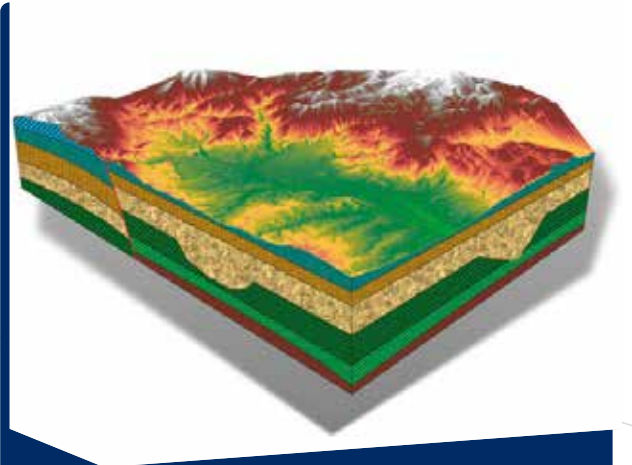
2D seismo-stratigraphic and geotechnical correlation



Fence diagram modelling



3D geological ground model



3D block diagramm

# Business Unit and Services | Laboratory

## Soil, Rock, Steel and Concrete Labs

DIMMS Group laboratories offer a wide range of tests both:

- On **Soil** starting from physico-volumetric parameters, passing through those mechanical and till dynamic parameters (from Resonant Column and Torsional Shear Test)
- On **Rock** determining starting from rocks physical parameters till their mechanical properties (eg compressive strength, tensile deformation, triaxial on rocks)



PHYSICAL CHARACTERISTICS

ATTERBERG LIMITS

DIRECT SHEAR

RESONANT COLUMN

TRIAXIAL

PARTICLE SIZE ANALYSIS

OEDOMETER

LOS ANGELES

MICRODEVAL

- On **Concrete** compressive strength tests and physico-chemical parameters;
- On **Steel** tests of mechanical strength, ductility, brittleness, physical-chemical resistance and durability.



BENDING TEST

TRACTION

PRESS FOR COMPRESSION

PRESS BEDDING

PUNCHING

RESILIENCE

# Business Unit and Services | Offshore

## Bathymetric, Morphological, Magnetometric and Seismic Survey



Bathymetric surveys  
MULTI BEAM



Marine geophysics  
SUB BOTTOM PROFILER



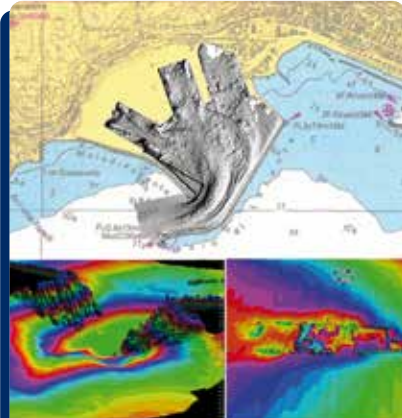
Morphological surveys  
SIDE SCAN SONAR



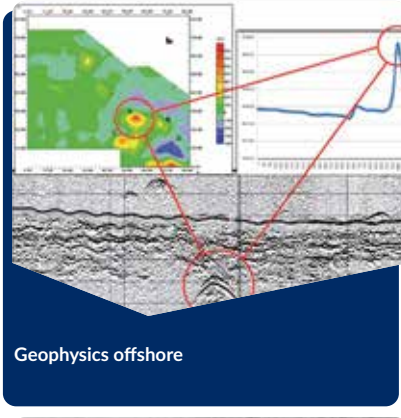
Magnetometric survey



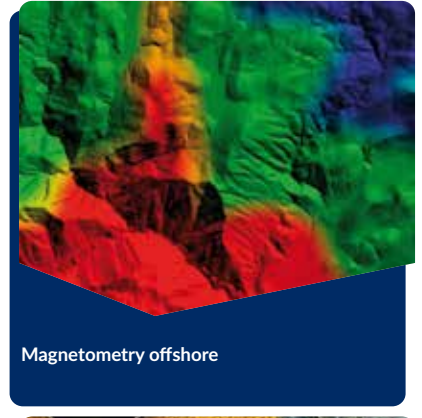
Archaeological surveys



Bathymetric charts 2D and 3D



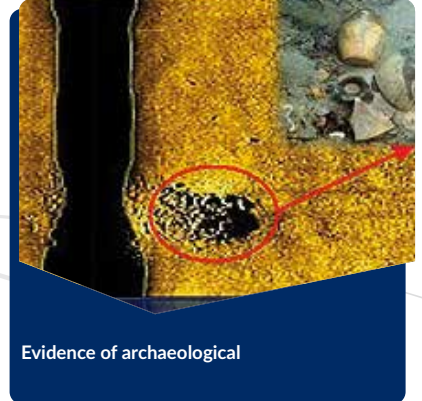
Geophysics offshore



Magnetometry offshore



Morphology offshore



Evidence of archaeological

Business Unit and Services | Offshore

## Bathymetric - Multi Beam

Continuous scan (Multi Beam) allows an accurate assessment of the characteristics of the seabed.

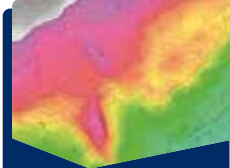
The acquired data are processed in a three-dimensional model (Digital Terrain Model) and geo-referenced high-precision and return representations of data using contour lines, quoted plans, sections and volume calculations.



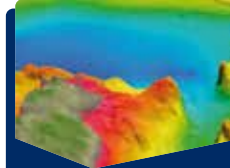
Bathymetric surveys  
MULTI BEAM



MULTI BEAM



Bathymetric charts 2D

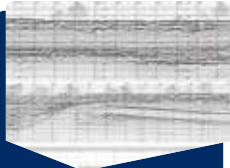


Bathymetric charts 3D

Business Unit and Services | Offshore

## Underwater Visual Inspection

Through the use of wire-guided vehicles ROV, will make visual inspections of platforms and / or carried out maintenance work as well as research target.



Geophysical survey



Underwater visual  
inspections



Support of core drilling



Identification and  
inspection of cables and  
pipelines

Business Unit and Services | Offshore

## Geotechnical Marine Survey



Vibro core samples



Gravity coring



Sampling with BOX  
coring



Coring rotation



Marine sampling  
BENNA VAN VEEN



## Surface and Underwater Positioning and Metrology Services



Vessel positioning



Underwater acoustic positioning (USBL)



Pipeline lay support and touchdown monitoring



ROV & divers positioning



Vessel/Barge spread and tug management



Underwater metrology (LBL)



Installation support



Anchor pattern and heading

## Laying Support for Pipelines and Cables

Geomarine provides solutions to give positioning services with new technologies with highly qualified personnel. To perform location services are used a wide range of communication programs that include the following activities:

### Operations offshore:

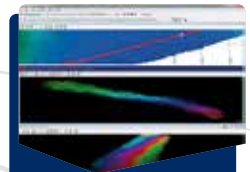
- Geophysical survey - Vessel and ROV mounted;
- Vibro-Coring & Gravity-Coring;
- Vessel and barges positioning;
- Anchor handling and tug management;
- Touch down monitoring;
- Pipe & Cable laying positioning and monitoring;
- Support during the Trancingoperation;
- Tripods and cliffs installation support and monitoring;
- Positioning and monitoring during dredging activities;
- Platforms and subsea installations;
- Underwater acoustic Positioning USBL & LBL.



Virtualization positioning



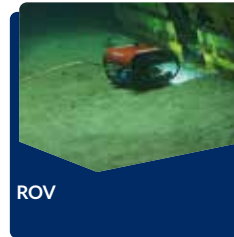
Cartography in support for installing subsea pipelines



Monitoring in the post-placement

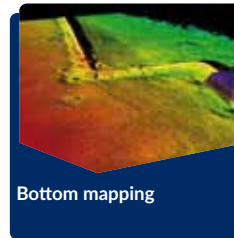
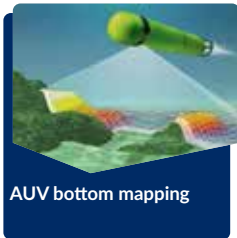
## Business Unit and Services | Offshore **Rov and Divers Inspection**

Geomarine's technical staff uses geophysics and their eyes to study and analyze seabed characteristics; seeing structures, fauna and lytological changes through direct images makes everything clearer and provide a sure result.



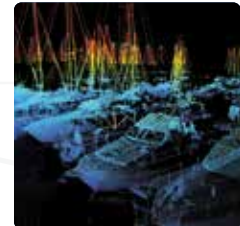
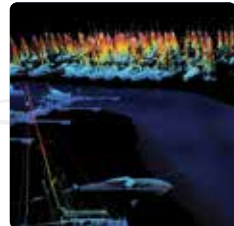
## Business Unit and Services | Offshore **Autonomous Underwater Vehicle (AUV)**

An autonomous underwater vehicle (AUV) is a robot which travels underwater without requiring input from a no perator. AUVs carry sensors to navigate autonomously and map features of the ocean. Typical sensors include compasses, depth sensors, sidescan and other sonars, magneto meters, thermistors and conductivity probes.

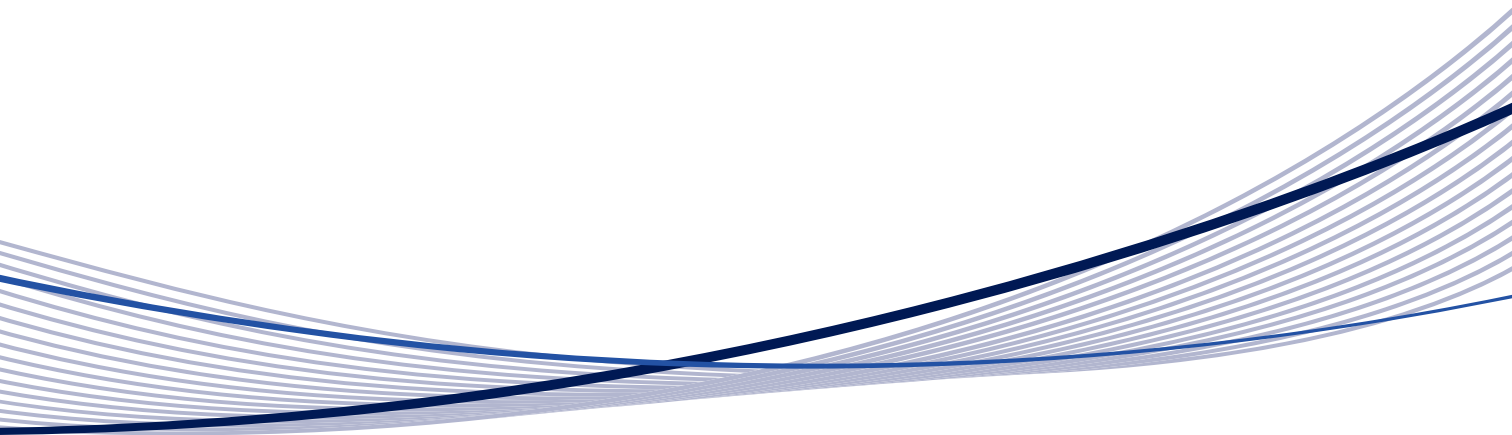


## Business Unit and Services | Offshore **Laser Scanner**

The laser scanner survey is an innovative measurement system that allows to detect and return with extreme precision surfaces and objects of any complexity and size together with anabsolutely exact digital reproduction and corresponding to reality.



The simultaneous use of the two instruments, installed on a sames uoport on board of a vessel, generates a model consisting of a set of millions of 3D points describing faithfully the work in its entirety.





**DIMMS Control SpA**  
Via Campo di Fiume, 13  
83030 Montefredane (AV) - ITALY  
t| +39 0825 24353 - f| +39 0825 248705



**DIMMS GEOPHYSICAL MOZAMBIQUE**  
Rua da Alcantara, 921 Bairro da Matola 700  
Matola - MOZAMBIQUE  
t| +258 21784162



**ELLETIPI Srl**  
Via Annibale Zucchini, 69  
44122 Ferrara - ITALY  
t| +39 0532 56771 - f| +39 0532 56119



**DIMMS Control SpA Mozambique branch**  
Rua da Alcantara, 921 Bairro da Matola 700  
Matola - MOZAMBIQUE  
t| +258 21784162



**GEOMARINE Srl**  
Via Guidi, 3/4  
60019 Senigallia (AN) - ITALY  
t| +39 071 6608346 -f| +39 071 6610775



**DIMMS Control SpA Filiala Bucuresti Srl**  
Bulevardul Regina Maria, 32  
Sectorul 4, 040125 Bucurest ROMANIA  
t| +40 21 367 3178 - f| +40 21 367 3442



[www.dimms.eu](http://www.dimms.eu)  
[info@dimms.eu](mailto:info@dimms.eu)